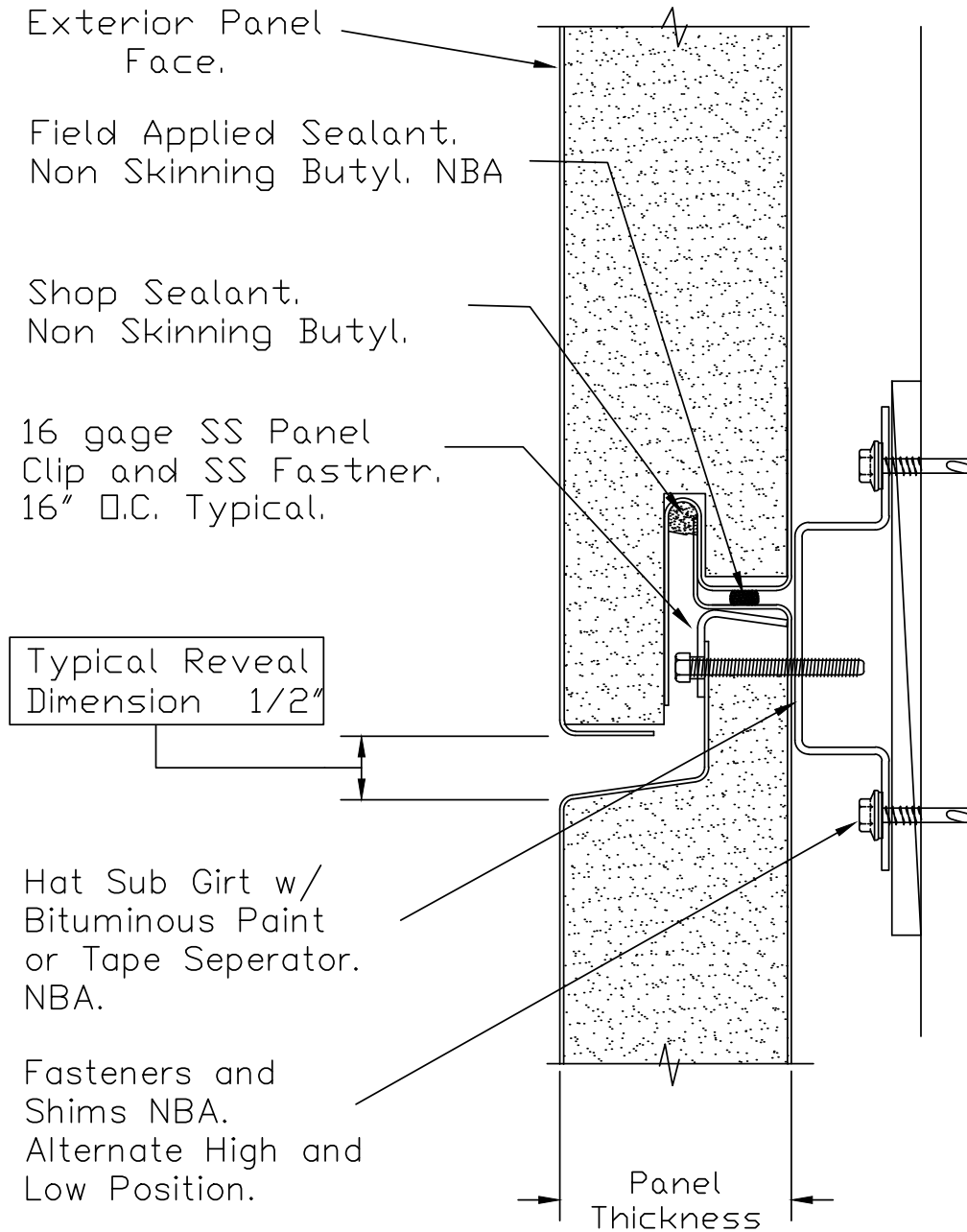




Sketch 40

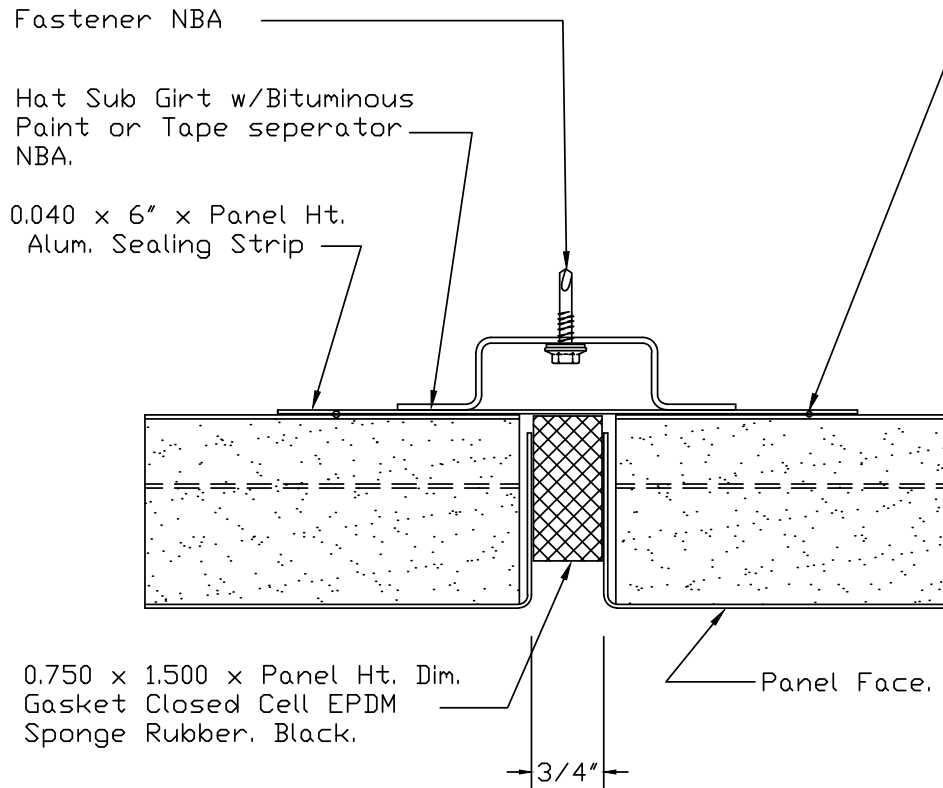


Horizontal Classic Wall typical horizontal joint



Sketch 41

Field Install 1/4 " Dia. Bead of Non-Skinning Butyl Sealant — Between Back of panel and Sealing Strip on Both Sides. NBA



Field Install 1/4" Dia. Bead of Non-skinning Butyl Sealant (NBA) Between Gasket and Panel Flanges on Both Sides.

Note: Marry all Vertical and Horizontal Beads of Seal to provide a continuous Weather Seal at the Back

Horizontal Classic Wall vertical joint with gasket

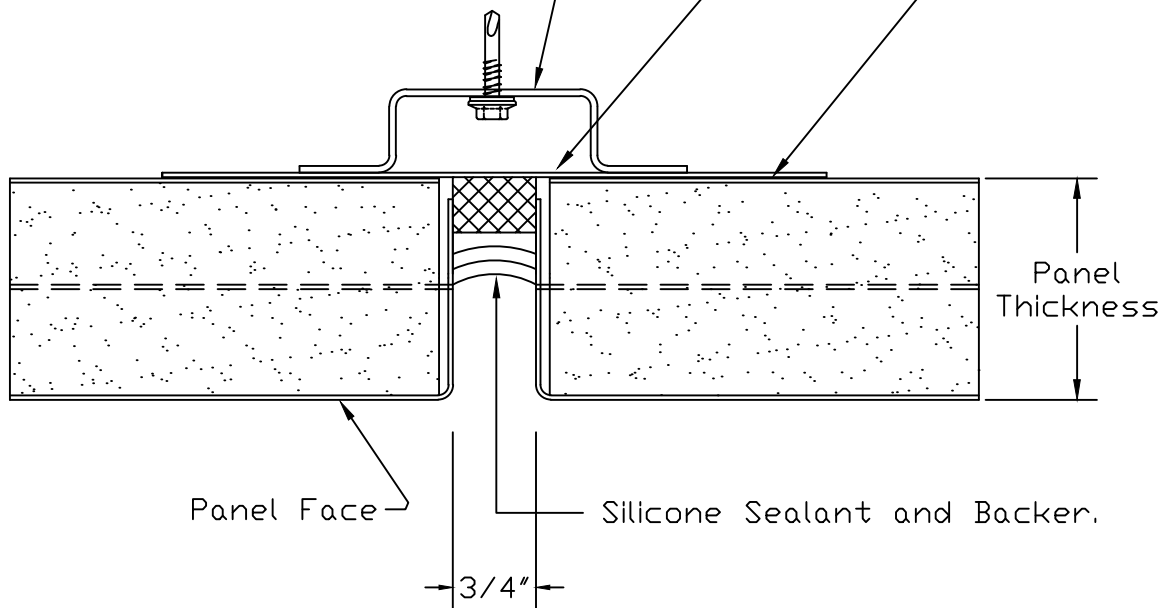


Sketch 42

Field Install 1/4 " Dia. Bead of Non-Skinning Butyl Sealant
Between Back of panel and Sealing Strip on Both Sides, NBA

0.040 x 6" x Panel Ht. Alum. Sealing Strip

Hat Sub Girt and Fastener,
Bituminous Paint or Tape
Seperator.- NBA.

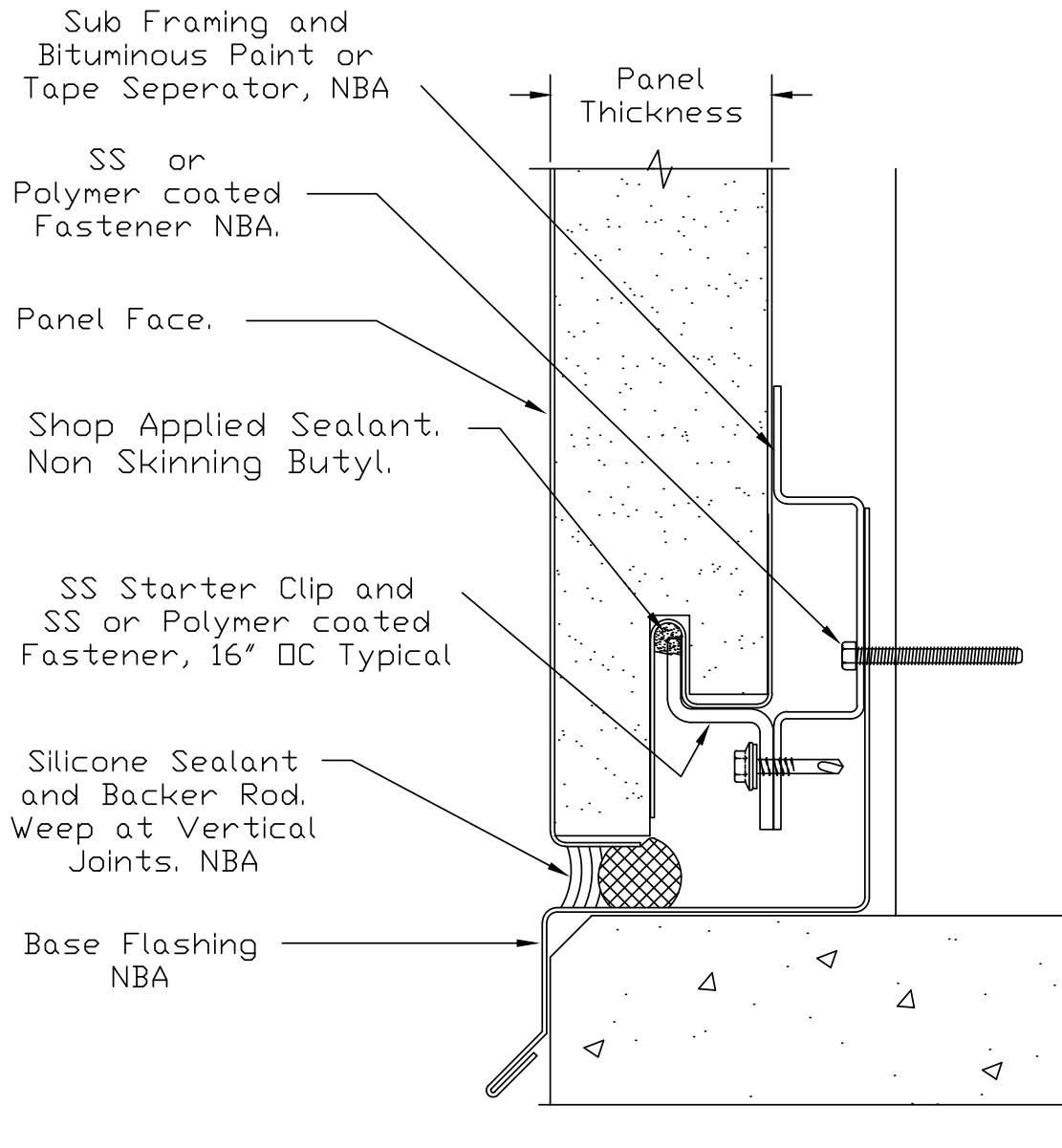


Note: Marry all Vertical and Horizontal Beads of Sealant
to provide a continuous Weather Seal at the Back Skin.

Horizontal Classic Wall vertical joint with sealant



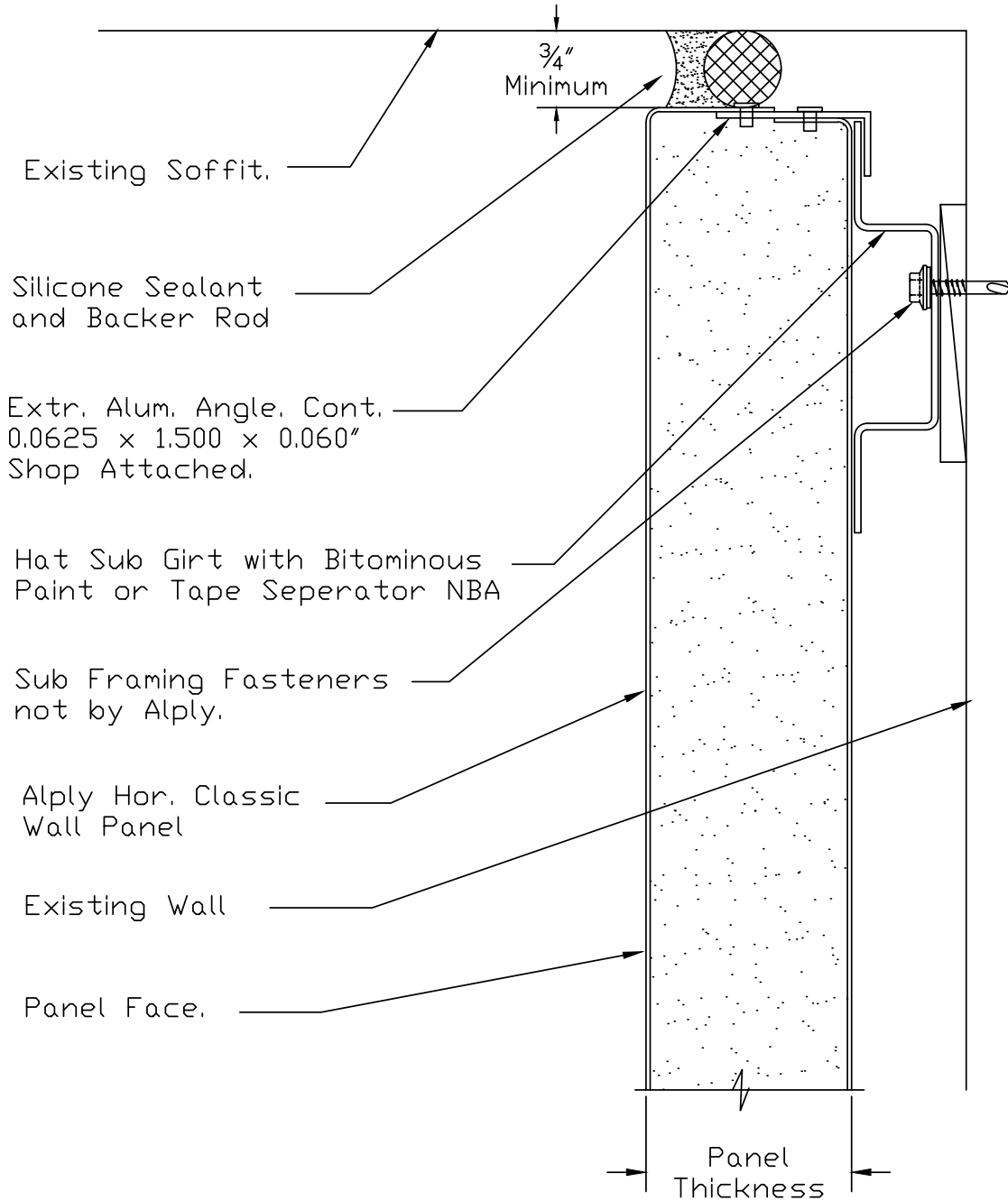
Sketch 43



Horizontal Classic Wall base detail of first panel to be installed



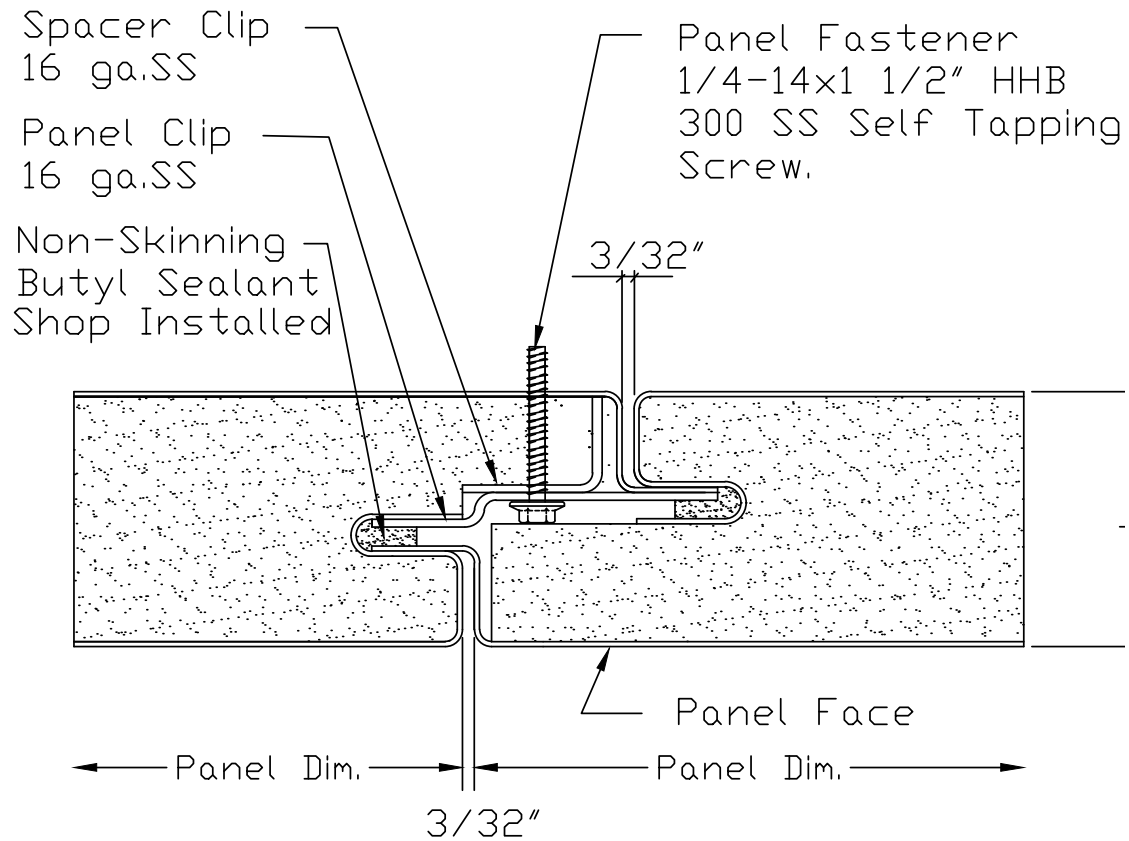
Sketch 44



Horizontal Classic Wall top panel connection



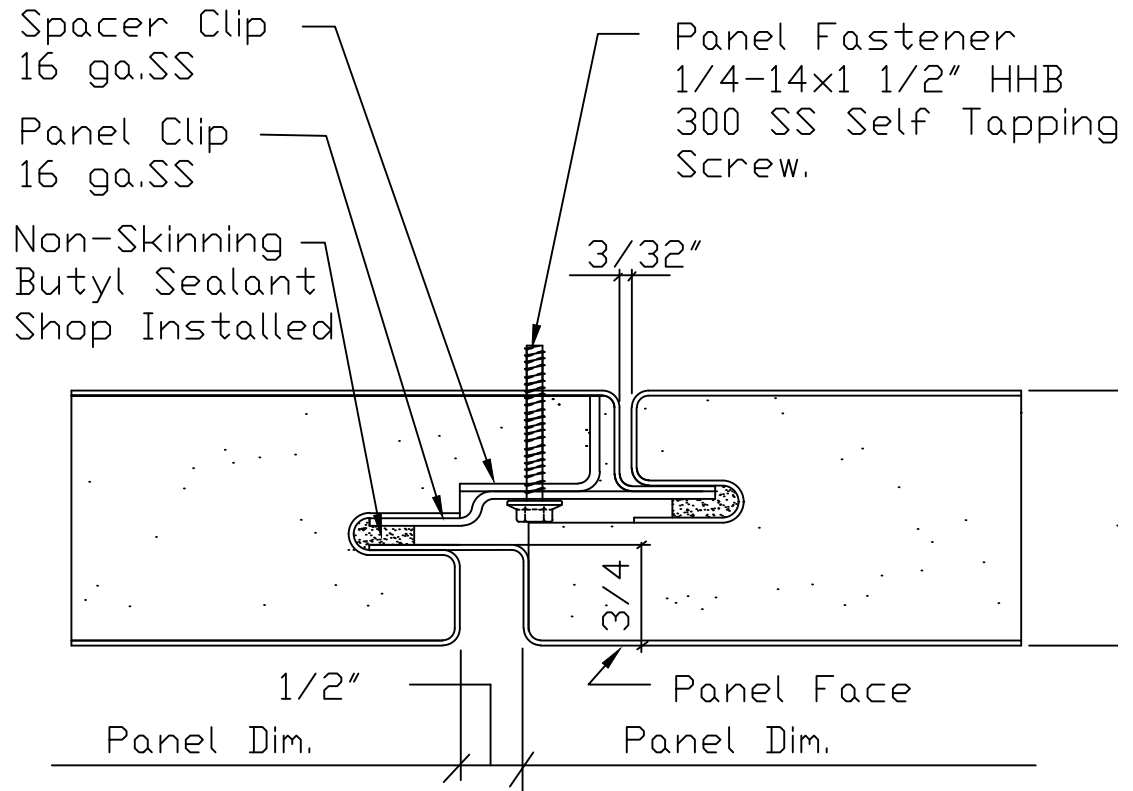
Sketch 45



Vertical Classic Wall vertical panel joint



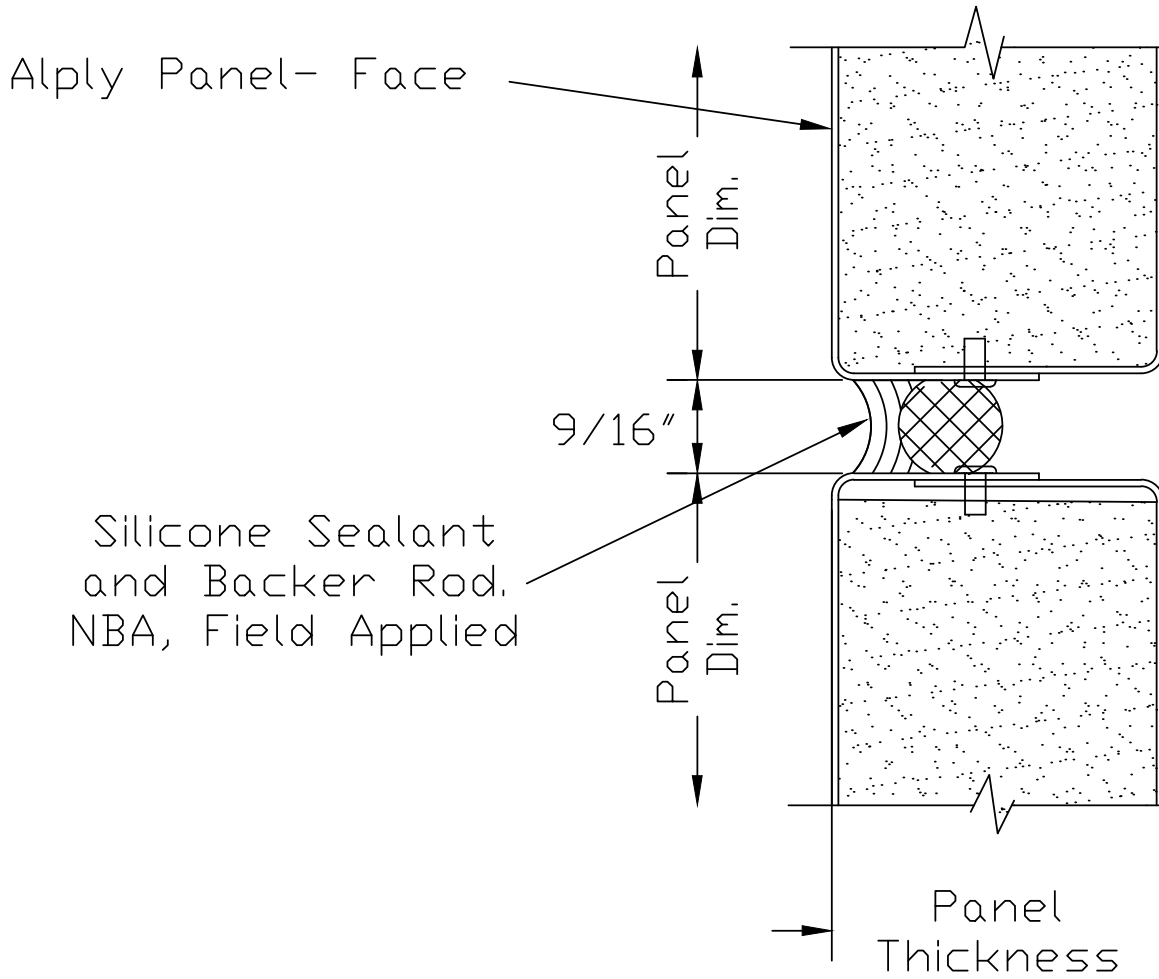
Sketch 46



Vertical Classic Wall vertical joint with reveal



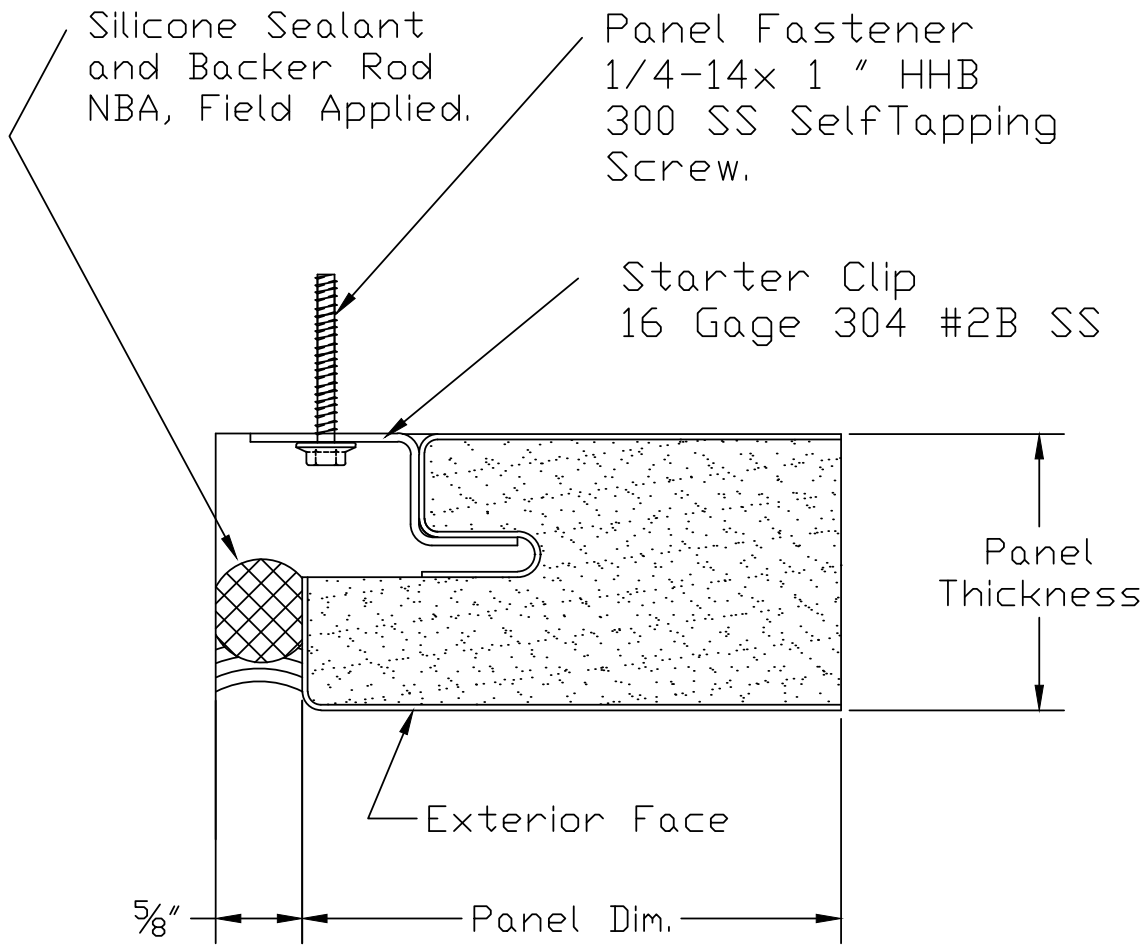
Sketch 47



Vertical Classic Wall horizontal silicone joint



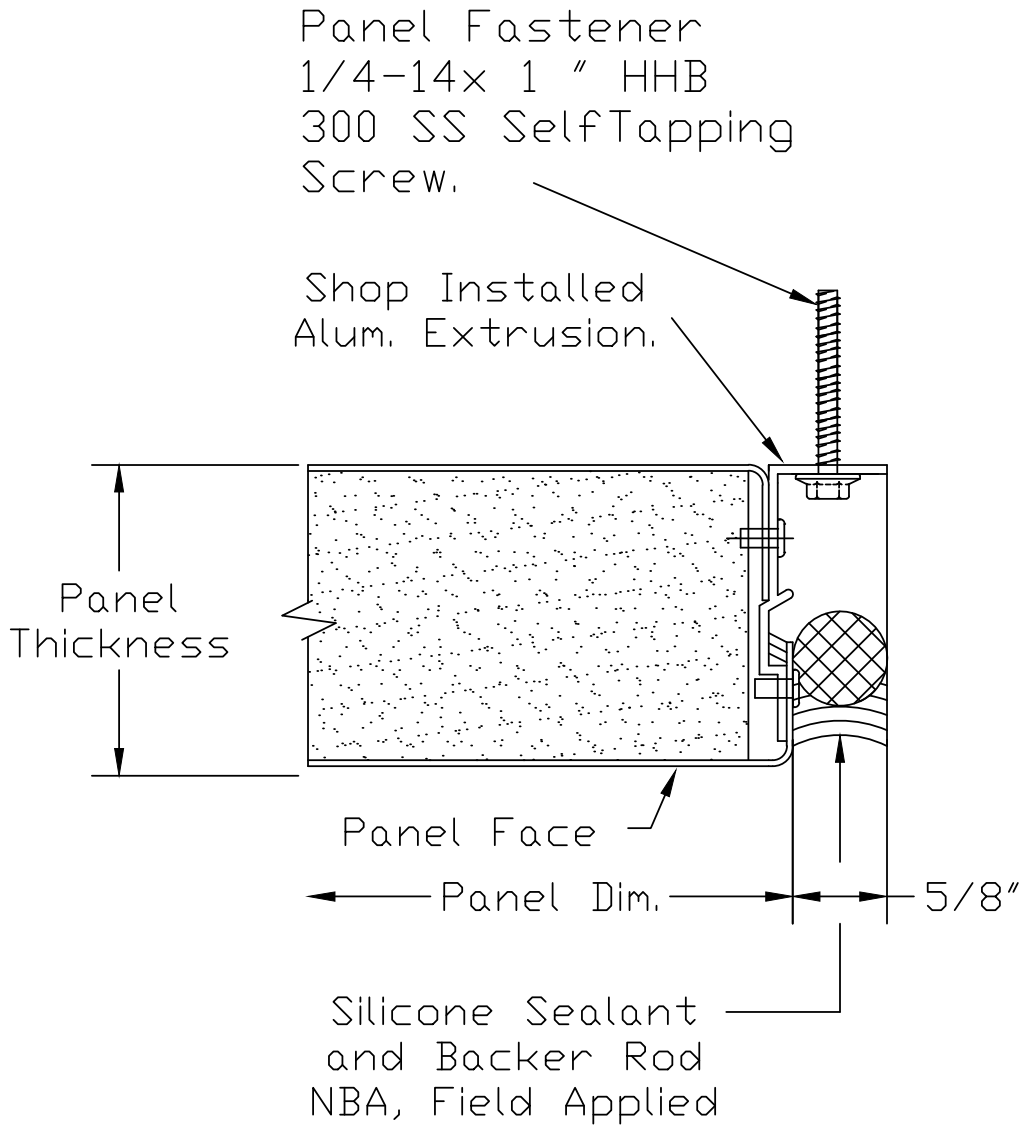
Sketch 48



Vertical Classic Wall starting edge condition



Sketch 49



Vertical Classic Wall last panel condition